

Cardiothoracic

- ✔ Atrial septal defect
- ✔ Ventricular septal defect
- ✔ Intracardiac Defects
- ✔ Pulmonary Stenosis
- ✔ Defects of the thoracic wall
- ✔ Pericardial closure
- ✔ Tetralogy of Fallot
- ✔ Congenital chest wall defects

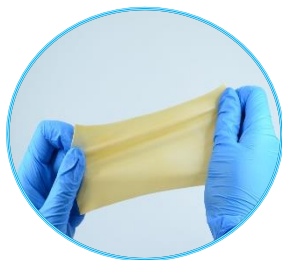
Vascular

- ✔ Venous Ulcers
- ✔ Femoral Endarterectomy
- ✔ Carotid Endarterectomy
- ✔ Renal artery disease
- ✔ Abdominal aortic aneurysm
- ✔ Claudication
- ✔ Carotid artery dissection

General Surgery

- ✔ Trachea repair
- ✔ Partial nephrectomy
- ✔ Rectovaginal fistula
- ✔ Peyronie's repair
- ✔ Cervical anastomotic leakage
- ✔ Parastomal Reinforcement
- ✔ Dura Substitute

Our Invengen Bovine Pericardial Tissue Patches excel in the 4 major categories



Ultimate Tensile Strength



Suture Retention



Burst Strength



Elasticity & Elongation

Wide Variety of Sizes with Uniformity

Model	XM-04	XM-05*	XM-06	XM-07*	XM-08*	XM-09	XM-10*
Size (cm)	0.6 x 8	0.8 x 8	1 x 6	1 x 10	1 x 14	1.5 x 8	1.5 x 10
Model	XM-11	XM-12	XM-13	XM-14	XM-15	XM-16	XM-17
Size (cm)	1.5 x 16	2 x 9	2.5 x 15	4 x 4	4 x 6	4 x 16	5 x 6
Model	XM-18	XM-19	XM-20	XM-21	XM-22	XM-23	
Size (cm)	5 x 10	6 x 8	6 x 10	7 x 10	8 x 14	10 x 16	

*Also available in tapered size.

Call the number or visit our website below to place an order for our products or speak to our sales representatives for more information!

+1 (949) 670-0403
info@tisgenx.com
www.tisgenx.com



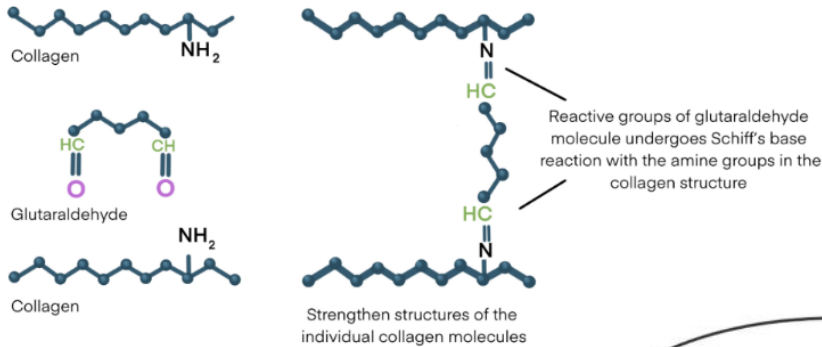
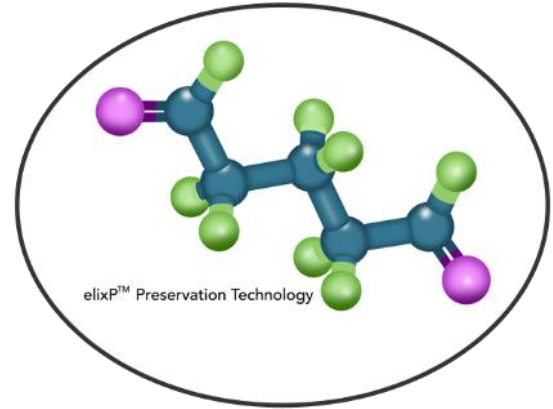
Tisgenx, Inc.
 15615 Alton Parkway,
 Irvine, CA 92618, USA



Medical Device Sales Services

Next Generation Technology

Our bovine pericardial tissue patch, Invengen®, is fixed with our proprietary elixP™ Fixation Technology. This preserves the triple helical structure of the individual collagen molecules (intramolecular) and between collagen fibrils (intermolecular). This fixation process achieves complete reduction of antigenicity and preserves the natural collagen formation of the tissue.

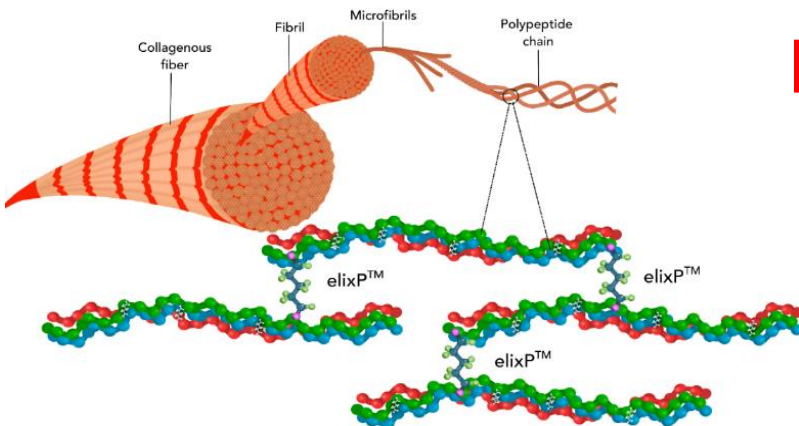
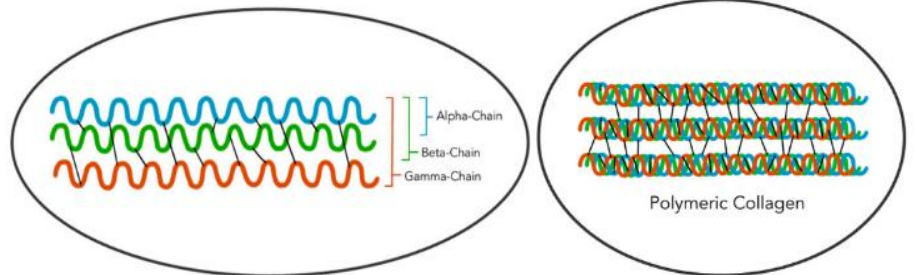


Meets Surgeon's Needs

This treatment leads to 100% crosslinking of the tissue to prevent unwanted effects such as suture line bleeding, delamination, and inflammatory response.

Prevents and Protects

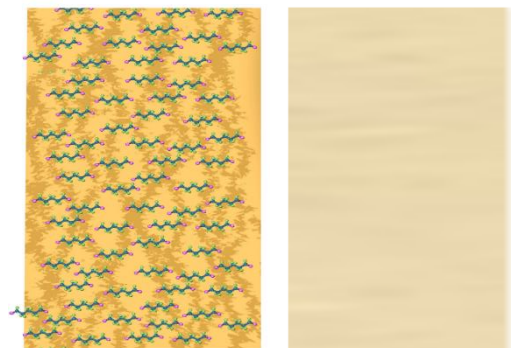
This fixation process achieves complete reduction of antigenicity and preserves the natural collagen formation of the tissue.



Designed for Durability

After fixation, our patches integrate seamlessly by supporting cell and tissue in-growth and maintains structural integrity and viability for longer than ever before possible.

elixP™ Fixated Tissue



Improved Healing

This advanced treatment leads to superior biocompatibility with the host tissue and prevents degradation to allow for a bovine pericardial tissue patch that can be trusted for a plethora of surgical applications.

